



ADVICE FOR RESIDENTS

Householders are legally responsible for all household waste produced on their property. Most household waste can be disposed of in your bags or wheeled bin.

If you need to dispose of large items such as sofas, fridges there are several ways to do this legally .

- ❖ Take large items to your council run tip . Find out about opening times on line.
- ❖ Consider hiring a skip .They can be value for money and you don't need a permit if its on your own property.
- ❖ Leicester city council can dispose of your large waste items as part of the bulky waste collection service .
- ❖ You can subscribe to a garden waste collection for an annual fee.

Find out more at
www.lesswaste.org.uk

Advice for businesses

- Under the Environmental Protection Act, every business has a duty of care when it comes to dispose of it's waste. If you are not meeting your legal responsibilities it could result in a fine or imprisonment.

Here are a few tips

- It is a legal requirement for businesses to use a licensed waste carrier to remove their waste –check they are registered.
- If you run a business from home you will still need to dispose of your waste correctly - you should not use you home waste collection.
- Provide a written description of your waste to the company collection your waste
- Keep signed copies of transfer notes for 2 years .
- Take action if you think your waste is being mishandled by those who remove it you could be fined if your waste is fly tipped.

Find out more by visiting
www.rightwasterightplace.com

UP DATES



A new gate was fitted on Carlisle street to help prevent ASB issues and fly tipping in the alley .

With a large number of side waste and fly tipping reported the city wardens will be doing a project for the Fosse ward to reduce the amount of side waste and fly tipping being left on the street this will include leaflets in different languages and other educational material .

Bin day for the Fosse Ward is either Thursday or Friday.

If you bin is broken or you don't have orange bags please contact our waste management team

[Leicester.gov.uk/recycling](https://leicester.gov.uk/recycling) you can also book a bulky collection

CITY WARDEN SERVICES



LOVE WHERE YOU LIVE

Fly Posters

7 Fixed Penalty notices have been issued for fly posting in the ward and another 2 companies are being prosecuted for the offence .

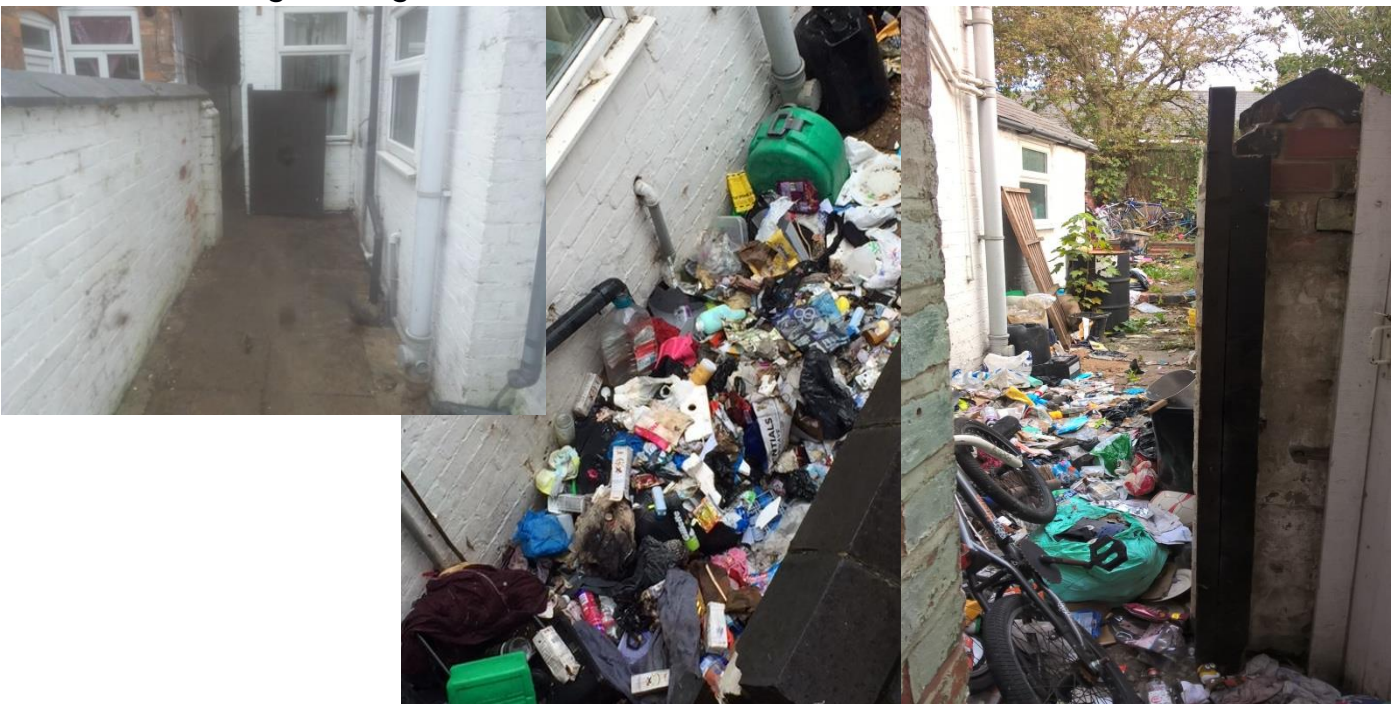
Bins on street project

I have been working on reducing the amount of wheelie bins being left out on the pathway out side of collection times .Tudor Road residents who left their bins out were all served notices and those who continued to leave the bins out have been issued with a fixed penalty notice , some properties have still have their bins out and I am working towards getting these removed .

The Next roads I will be working on is Vernon street and Vaughan street.

Private Gardens/yards

This garden was a great concern and notices were served on the land owner to get the garden cleared



CITY WARDEN SERVICES



Email: city.warden@leicester.gov.uk

Website: www.leicester.gov.uk/myaccount



Facebook:
Leicester city wardens



Twitter:
City wardens

These are the main issues that the City Wardens can help with:

- Educating the public and raising awareness of environmental crimes

Enforcement work on the following issues:

- Littering
- Dog fouling, dogs on leads, dogs exclusion from land
 - Bins on the street (domestic and commercial)
- Free distribution of printed material
 - Fly posting
 - Small scale fly tipping
 - Graffiti
- Vehicles for sale on the road
- Repairing vehicles on the road
- Failure to produce waste transfer documents
 - Skips and scaffolding
- Rubbish on private land

FOSSE WARD



CITY WARDENS WORKING WITH YOU TO IMPROVE THE CITY'S ENVIRONMENT